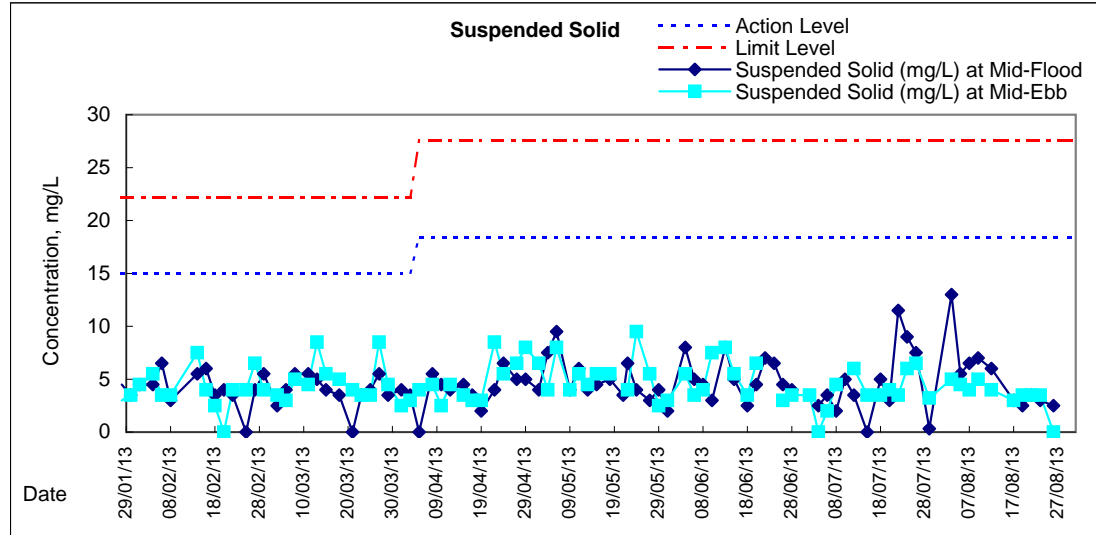
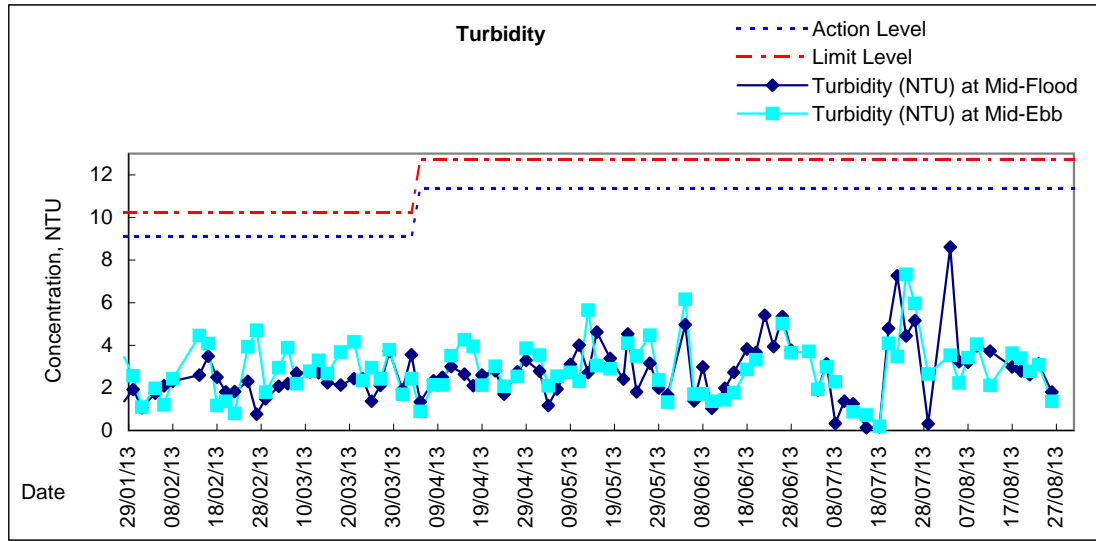
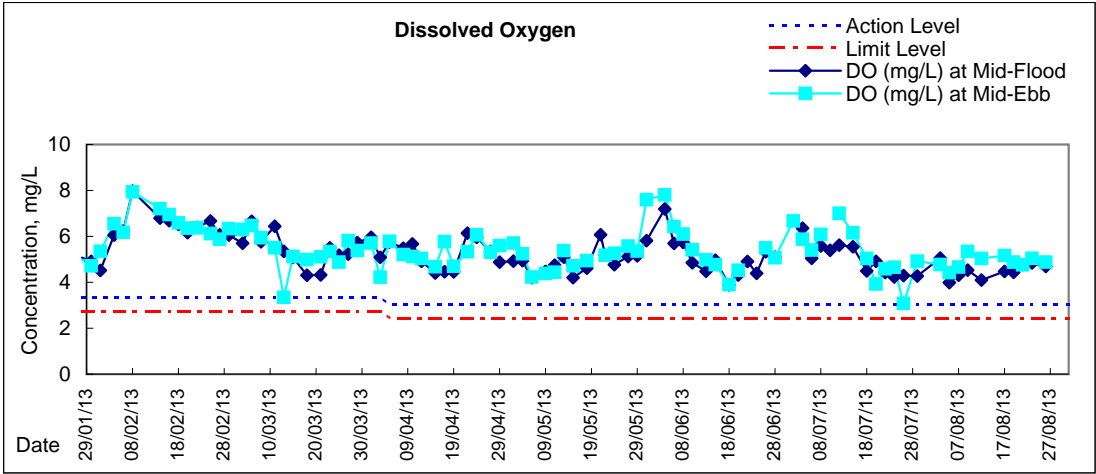
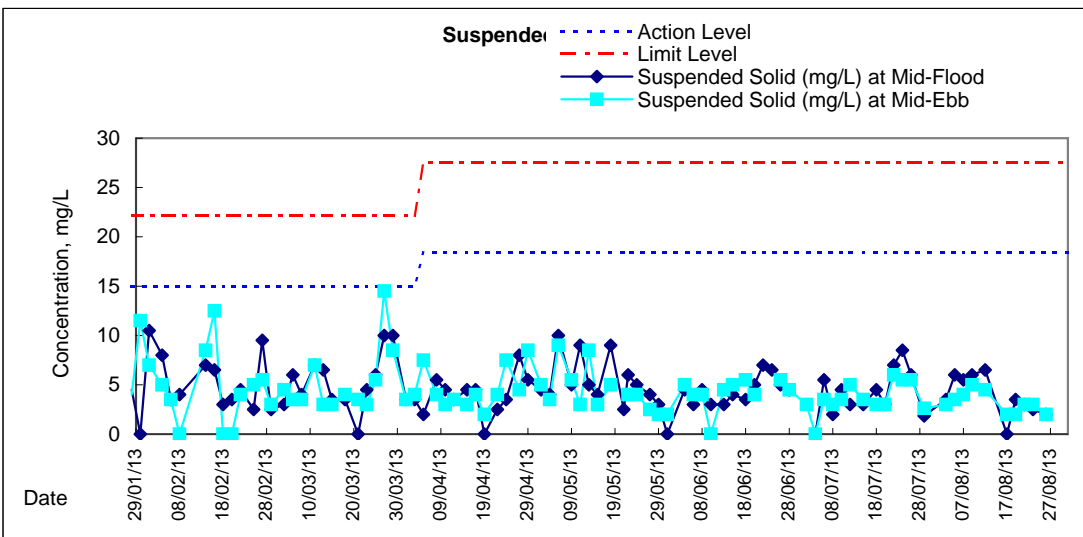
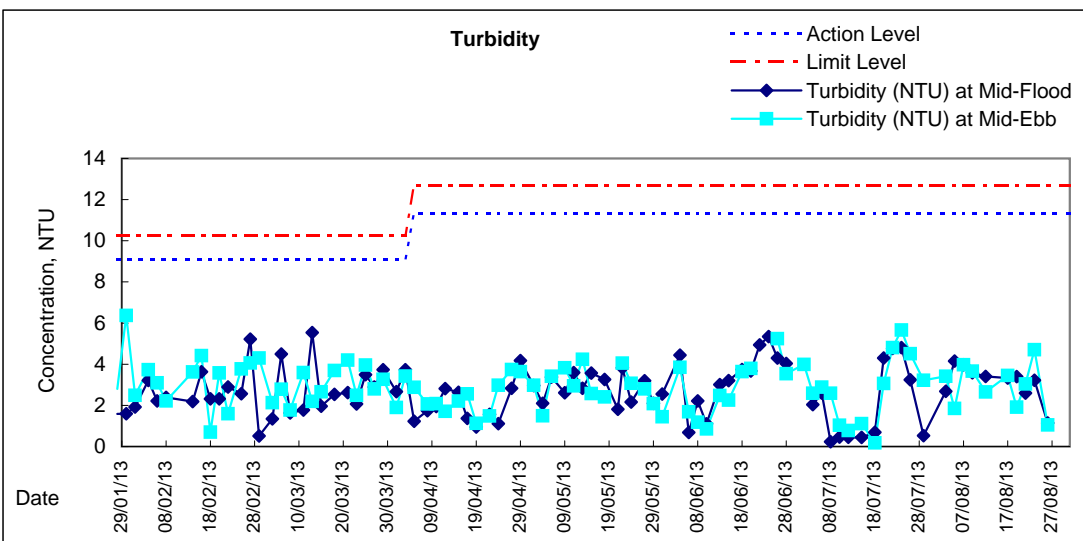
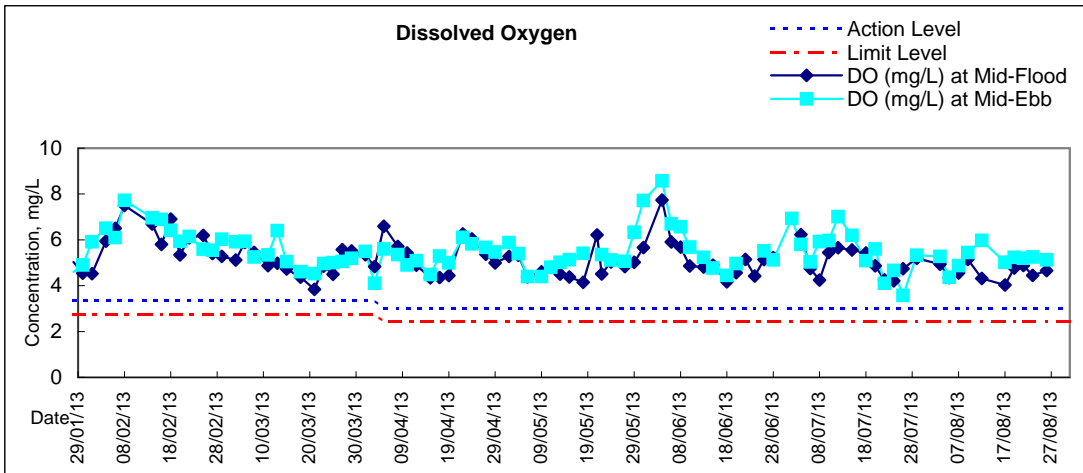
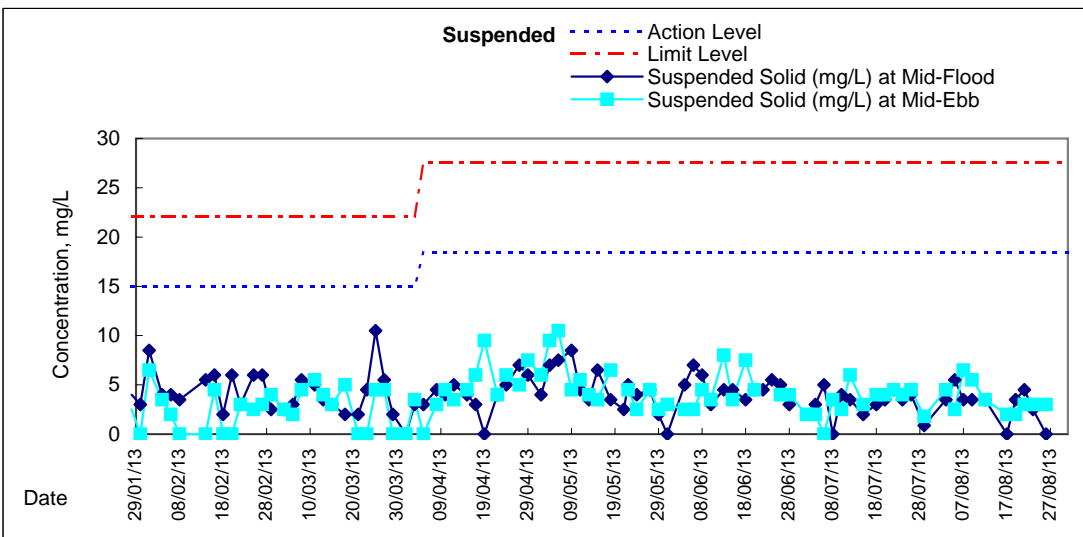
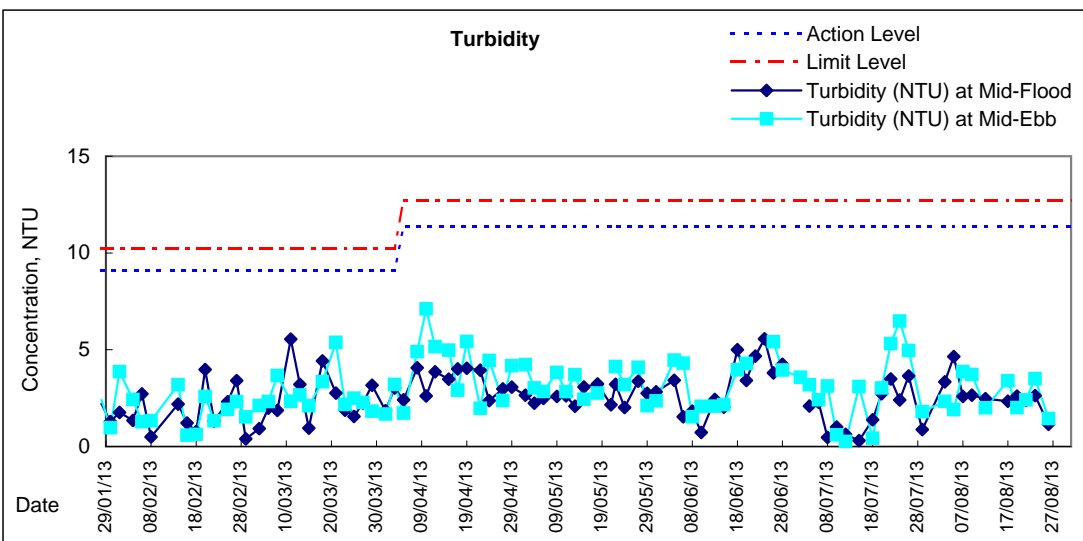
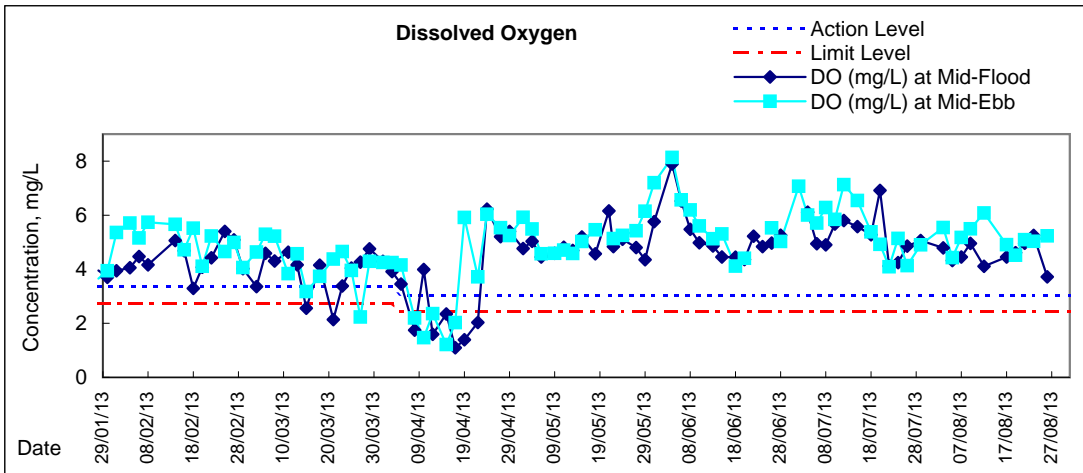
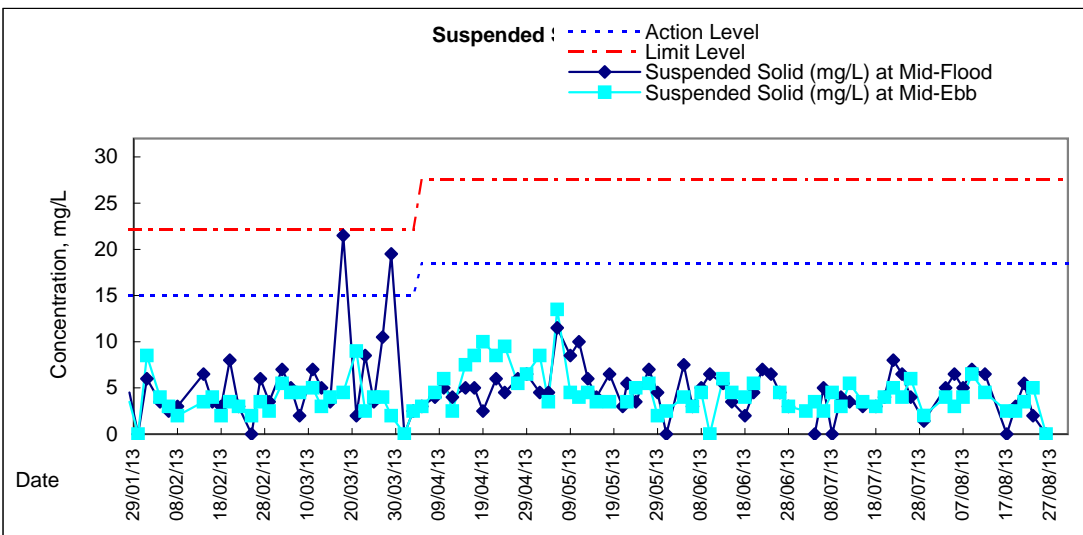
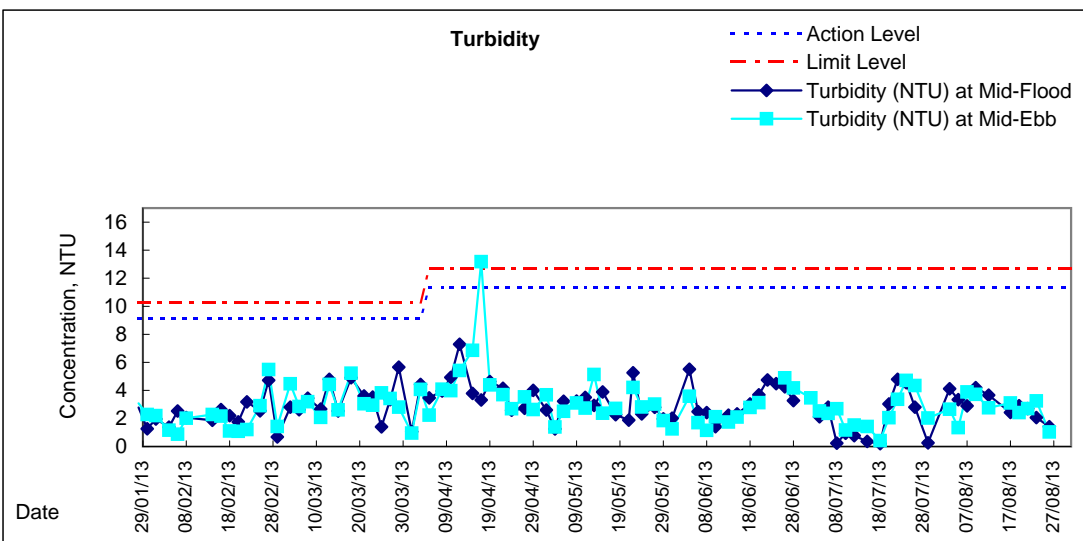
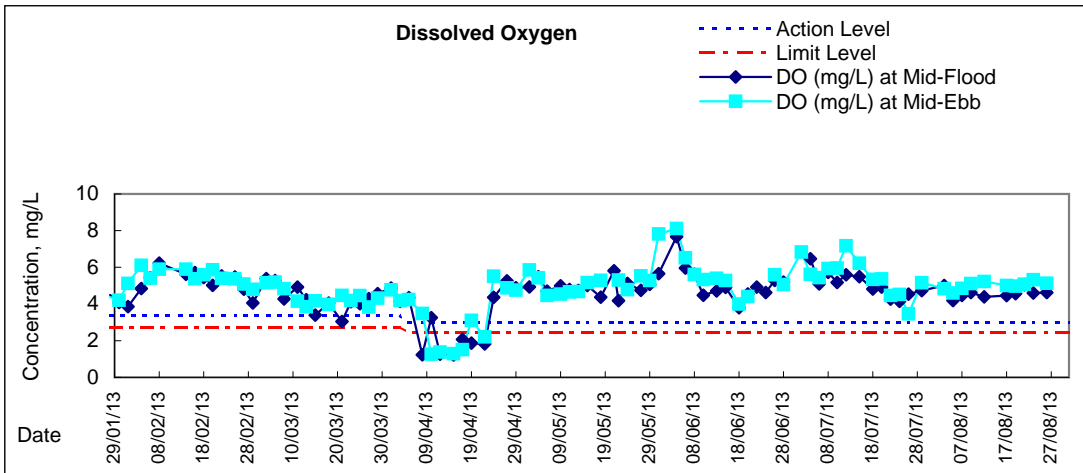


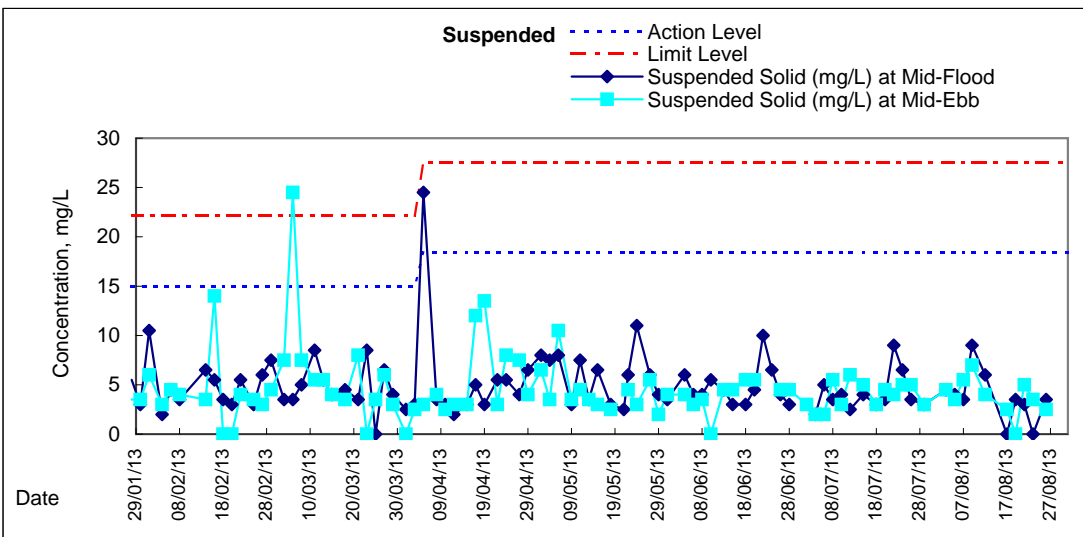
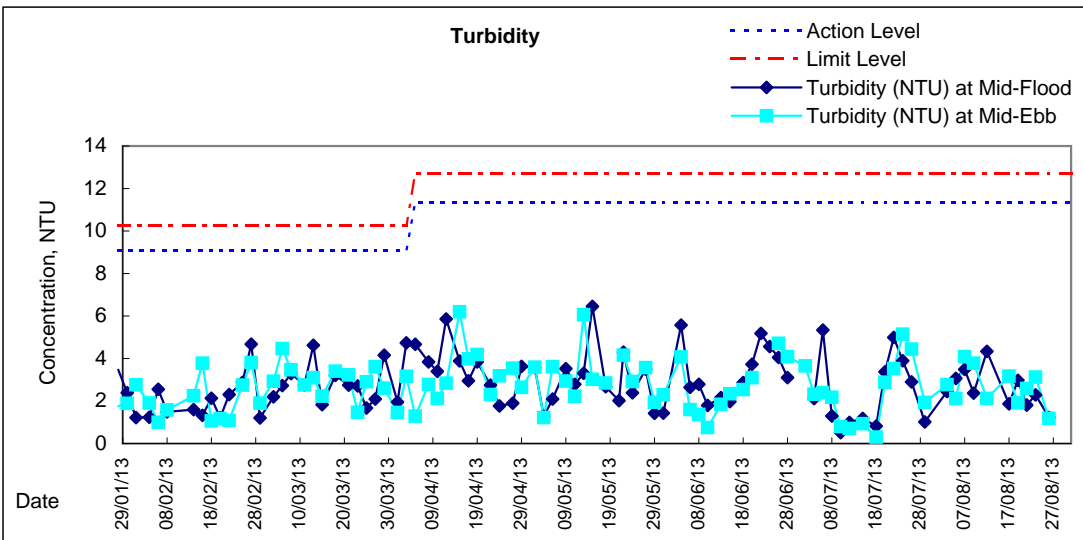
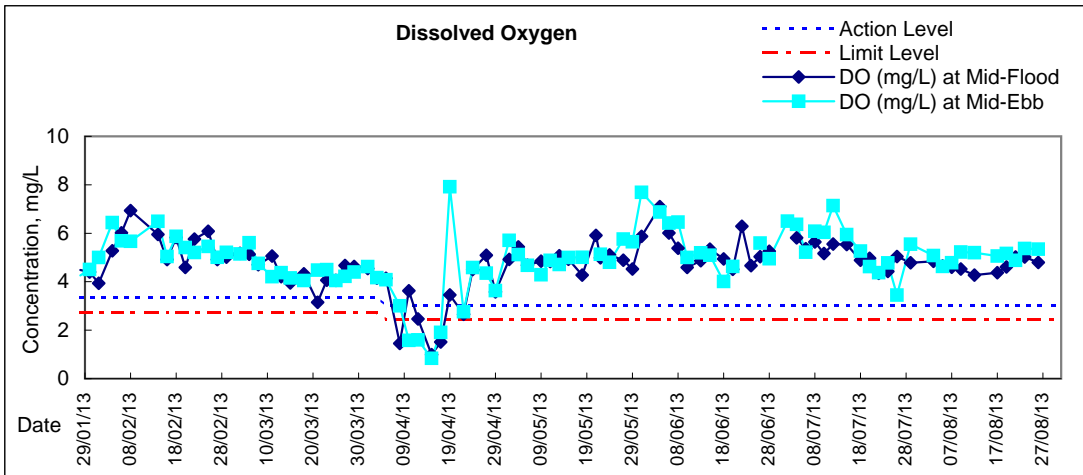
## Graphic Presentation of Water Quality Result of C1 - HKCEC







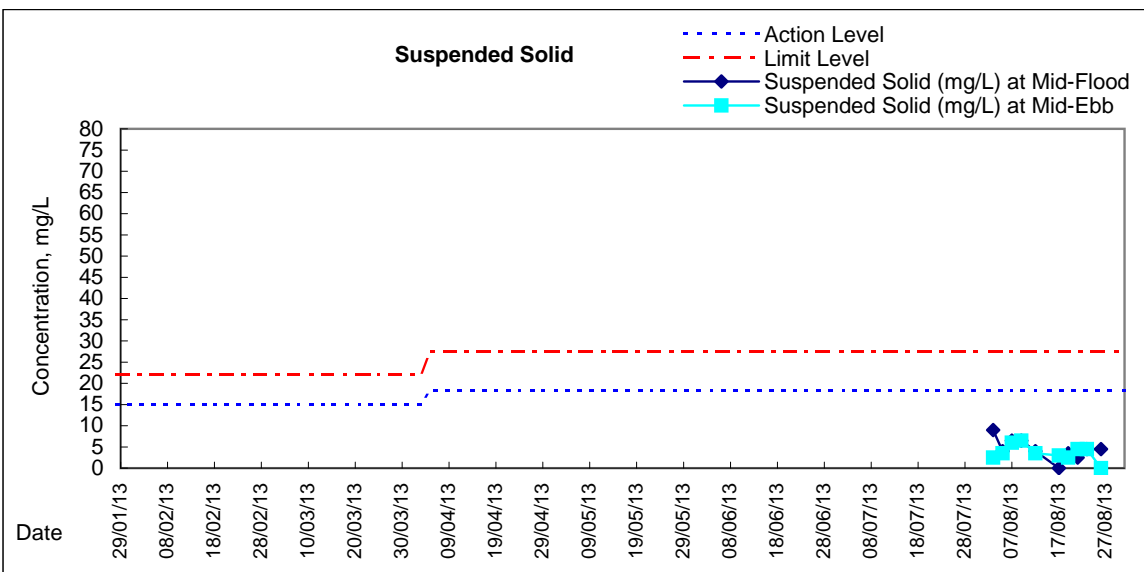
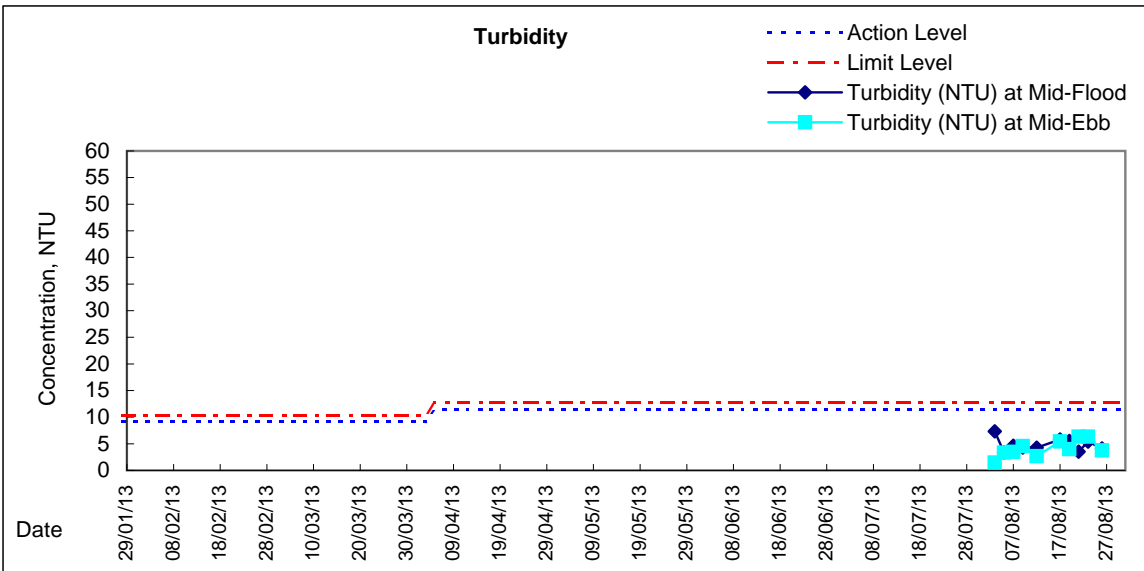
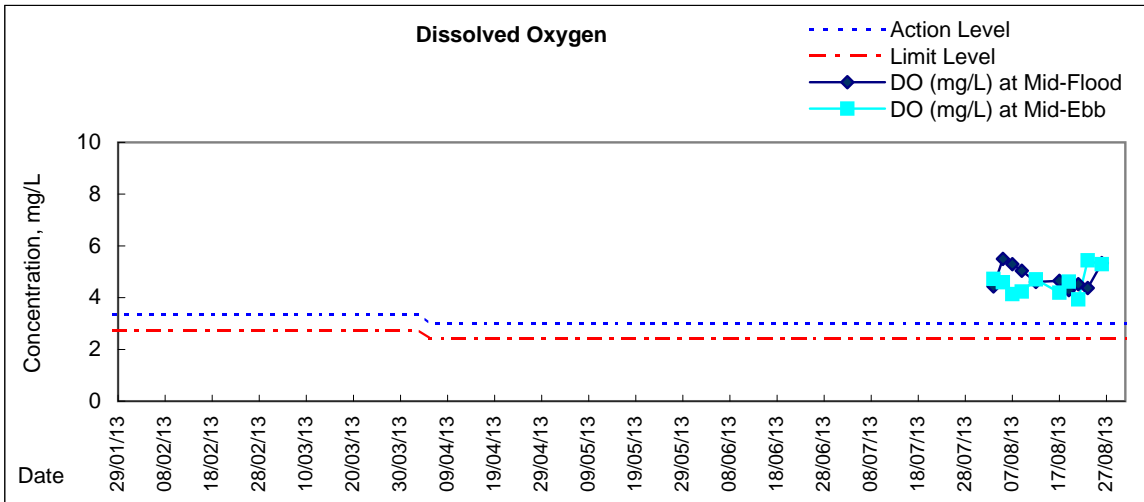






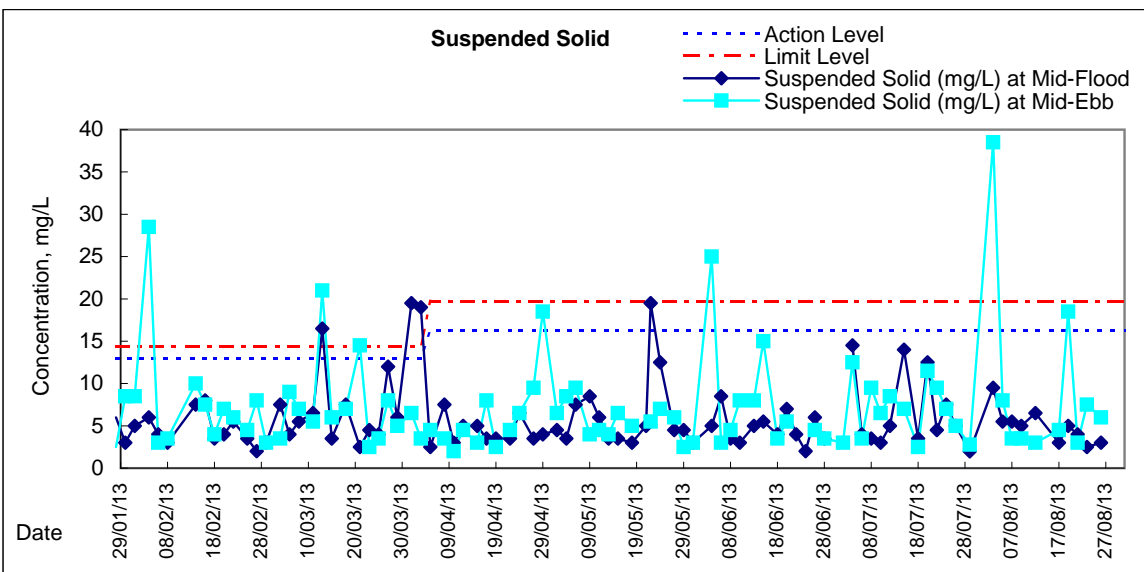
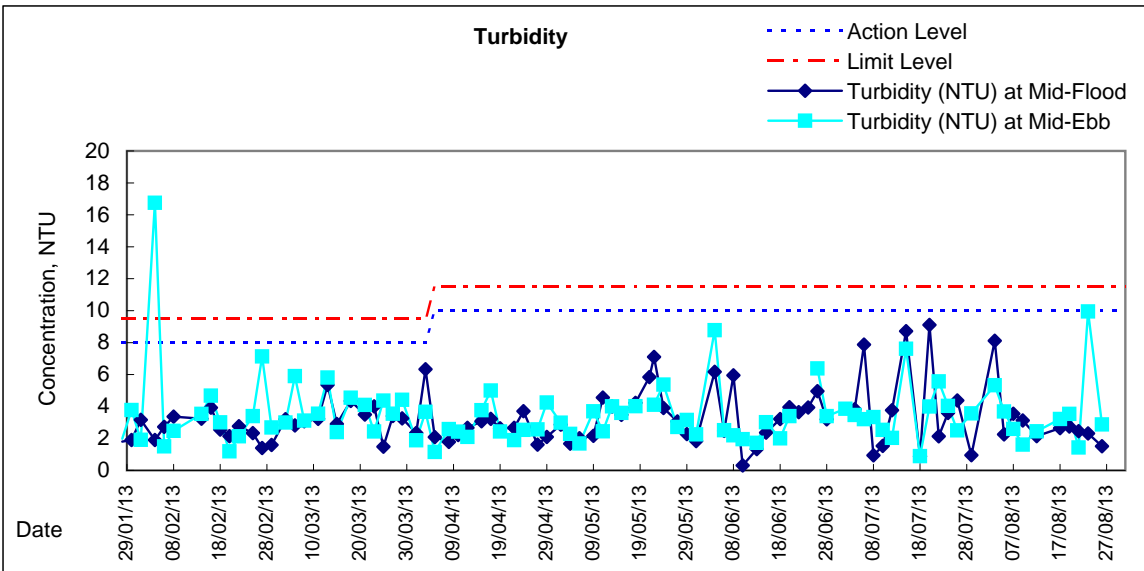
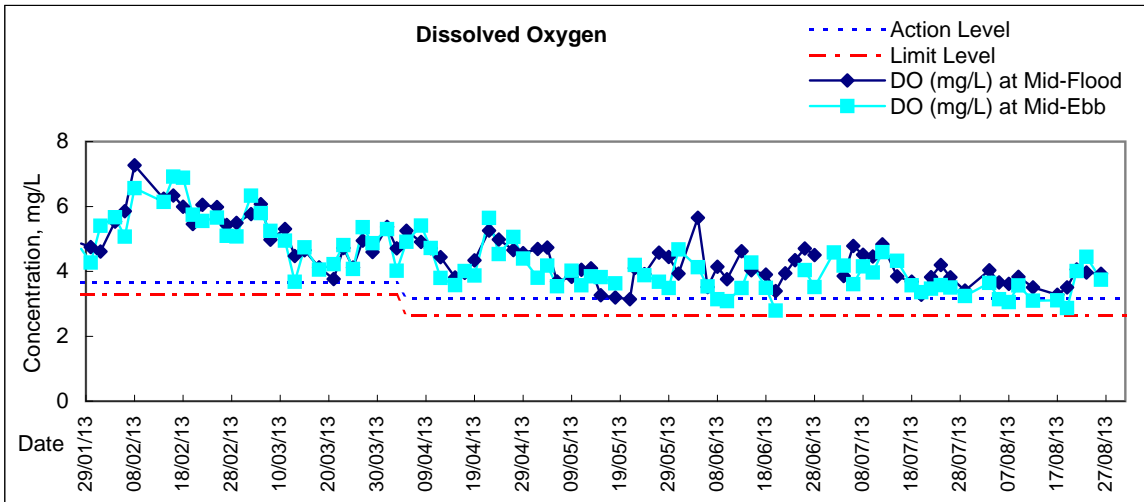


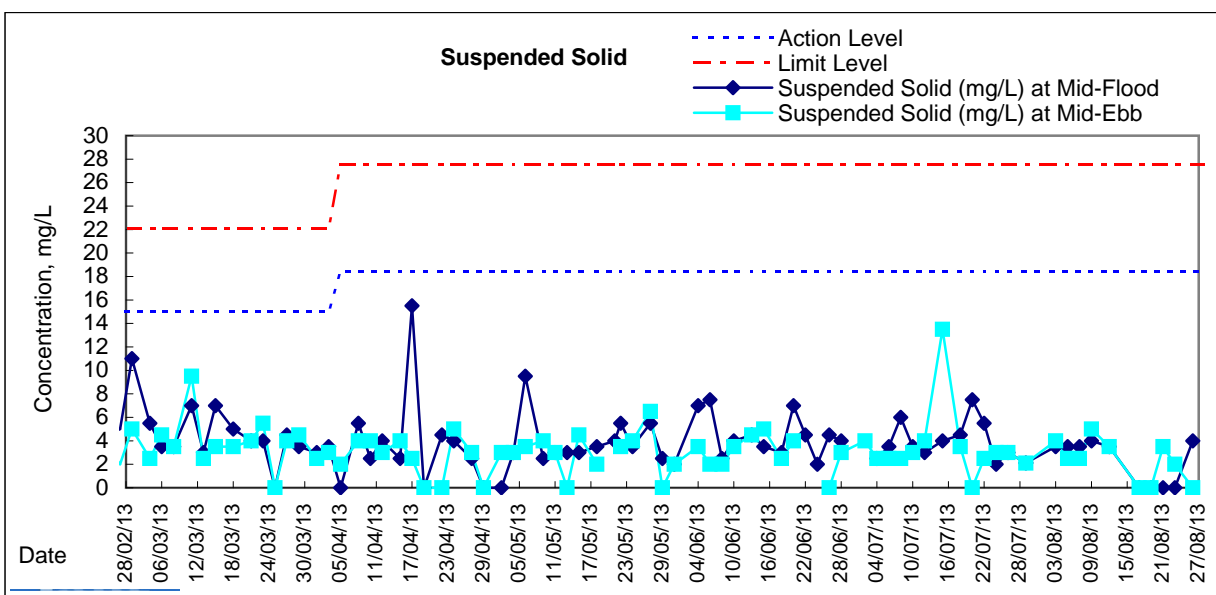
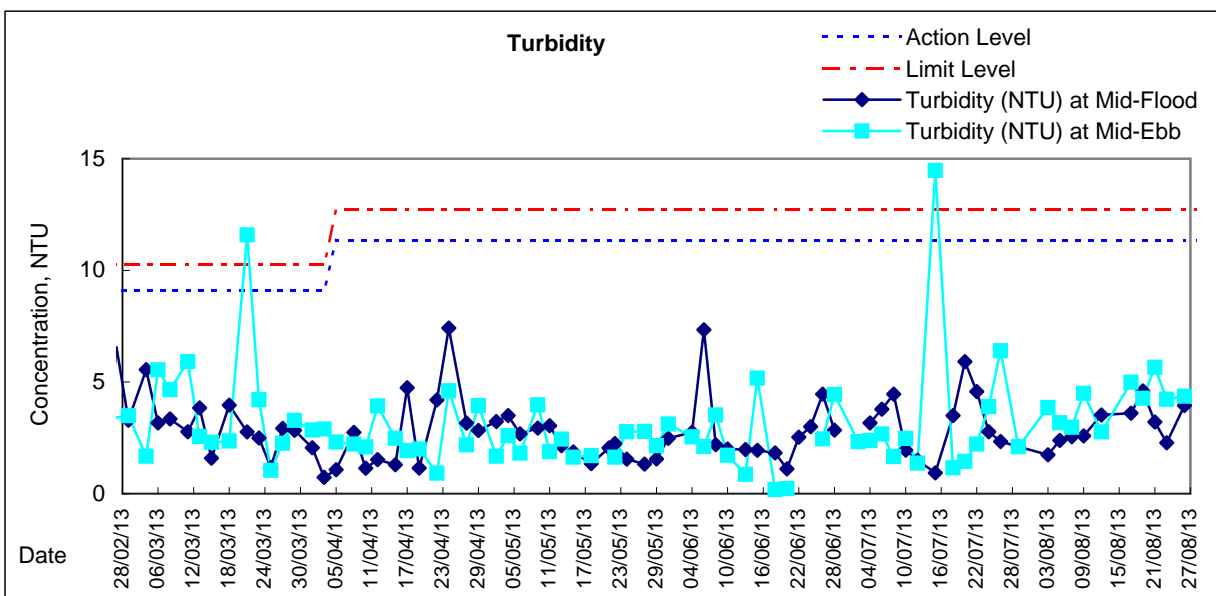
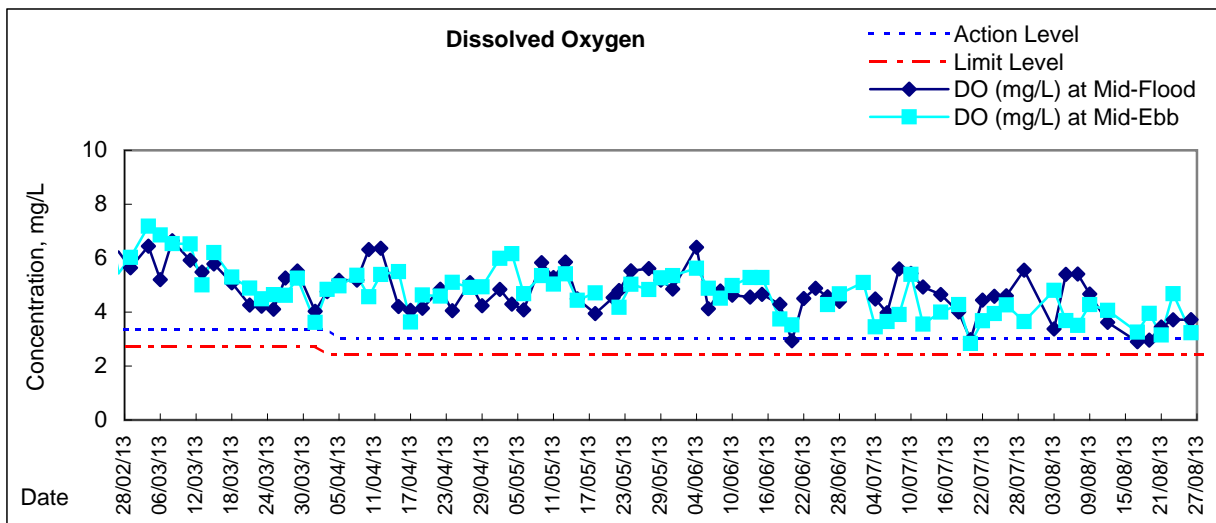
# Graphic Presentation of Water Quality Result of RW21-P789 - GEC/CRC/SHK



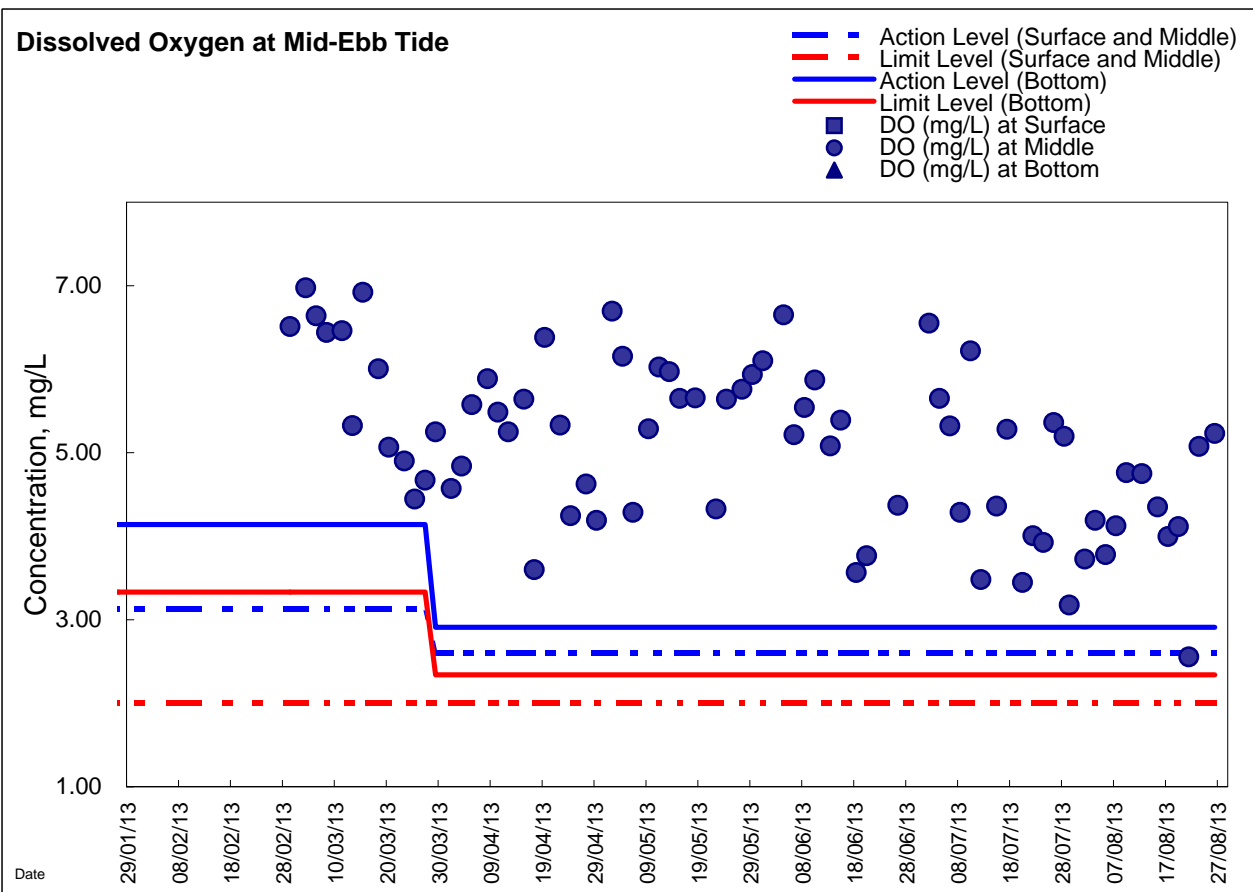
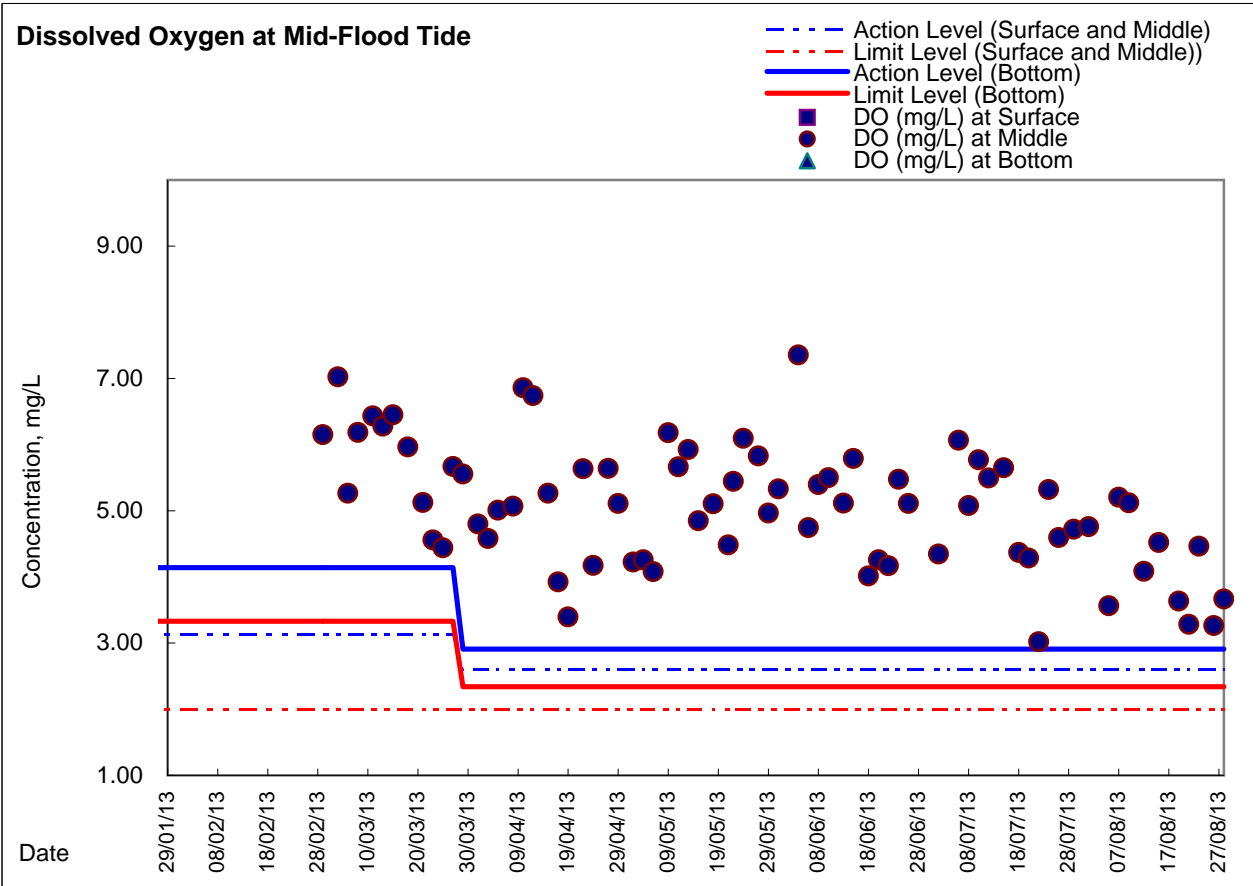


# Graphic Presentation of Water Quality Result of WSD21 - Wan Chai



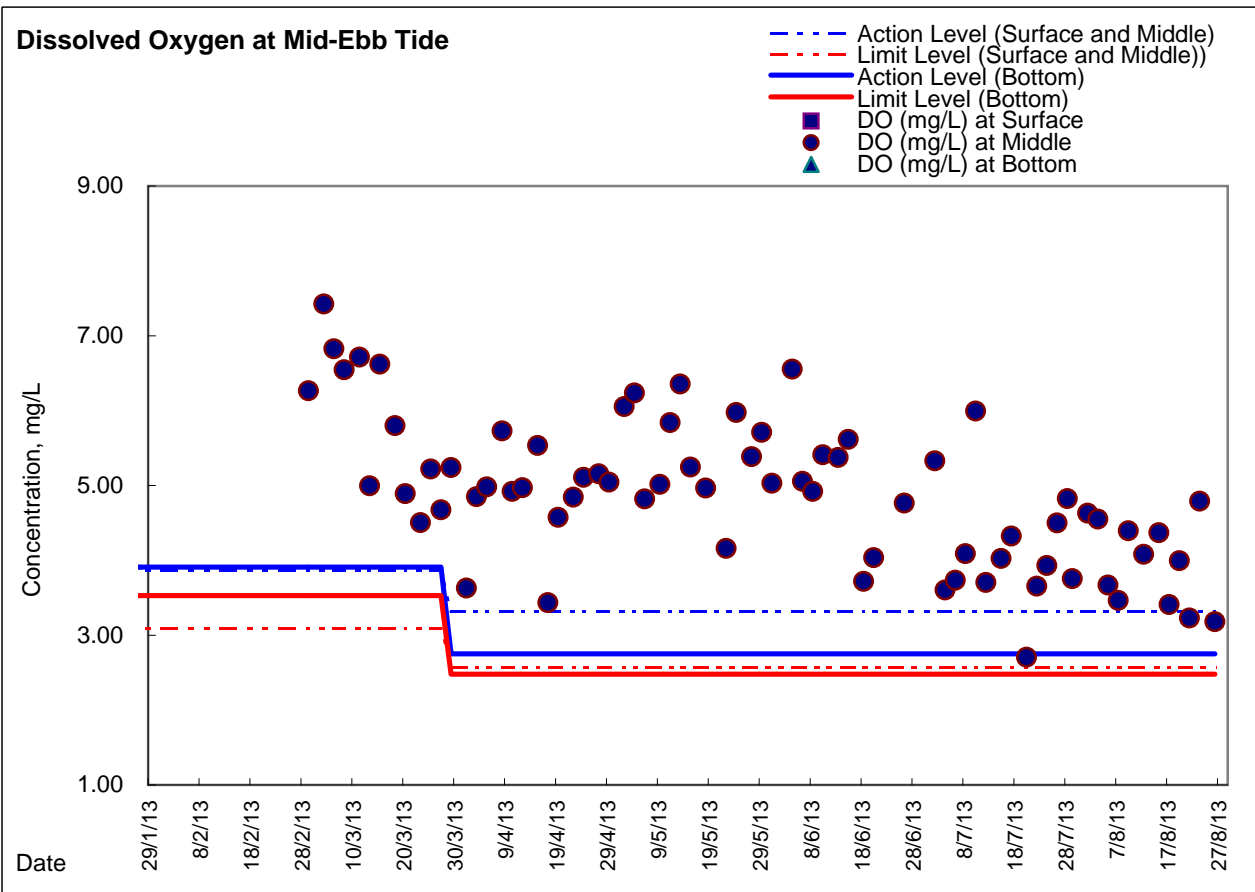
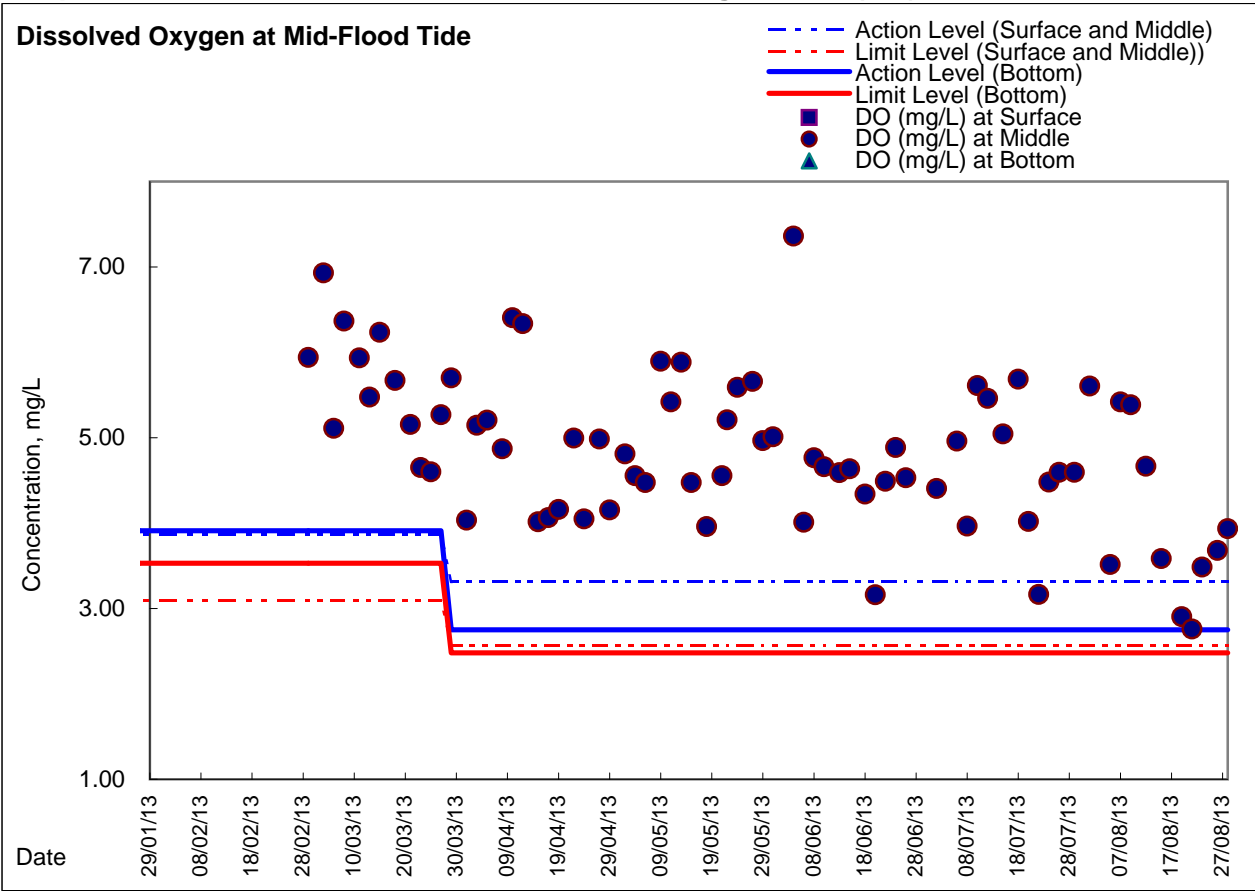


### Graphic Presentation of Enhanced Water Monitoring Results (DO) at C6 - Excelsior Hotel

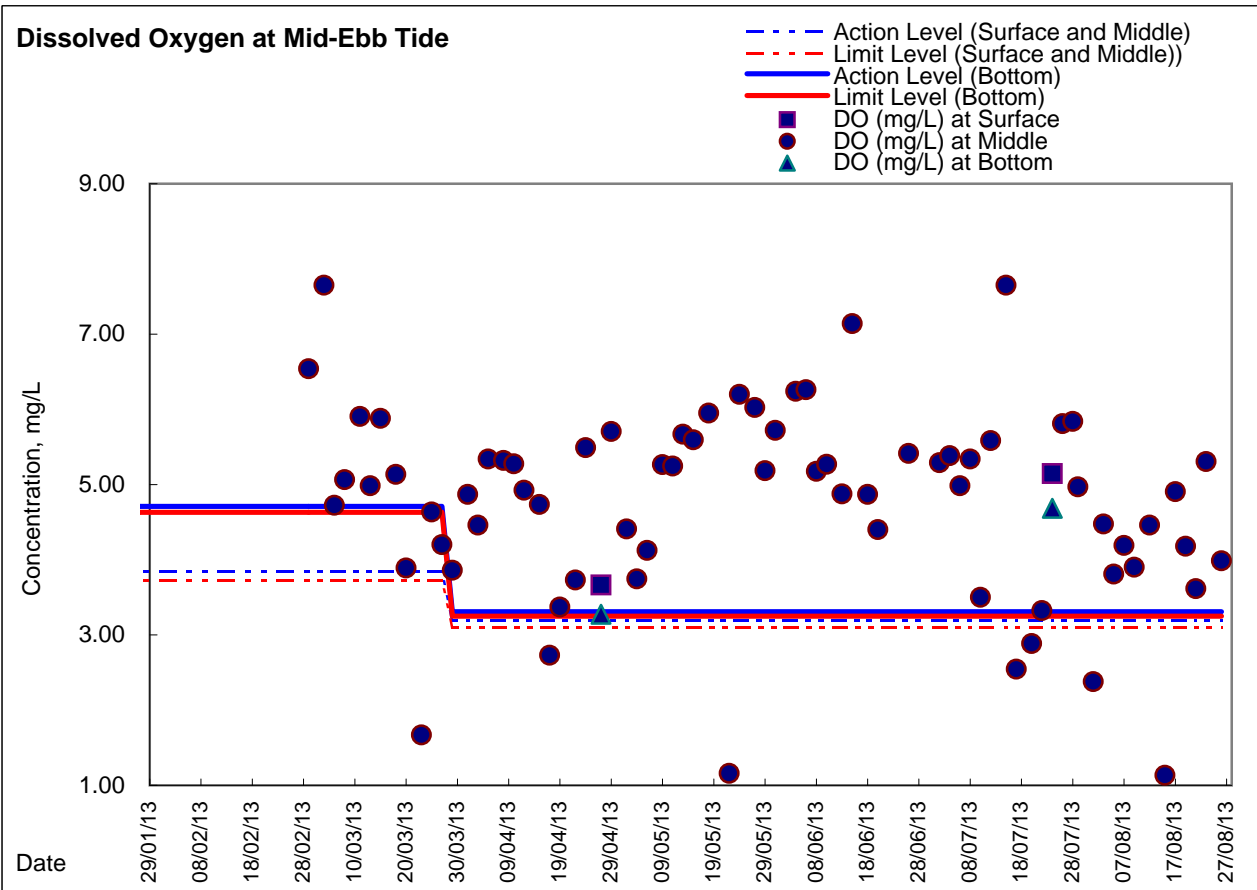
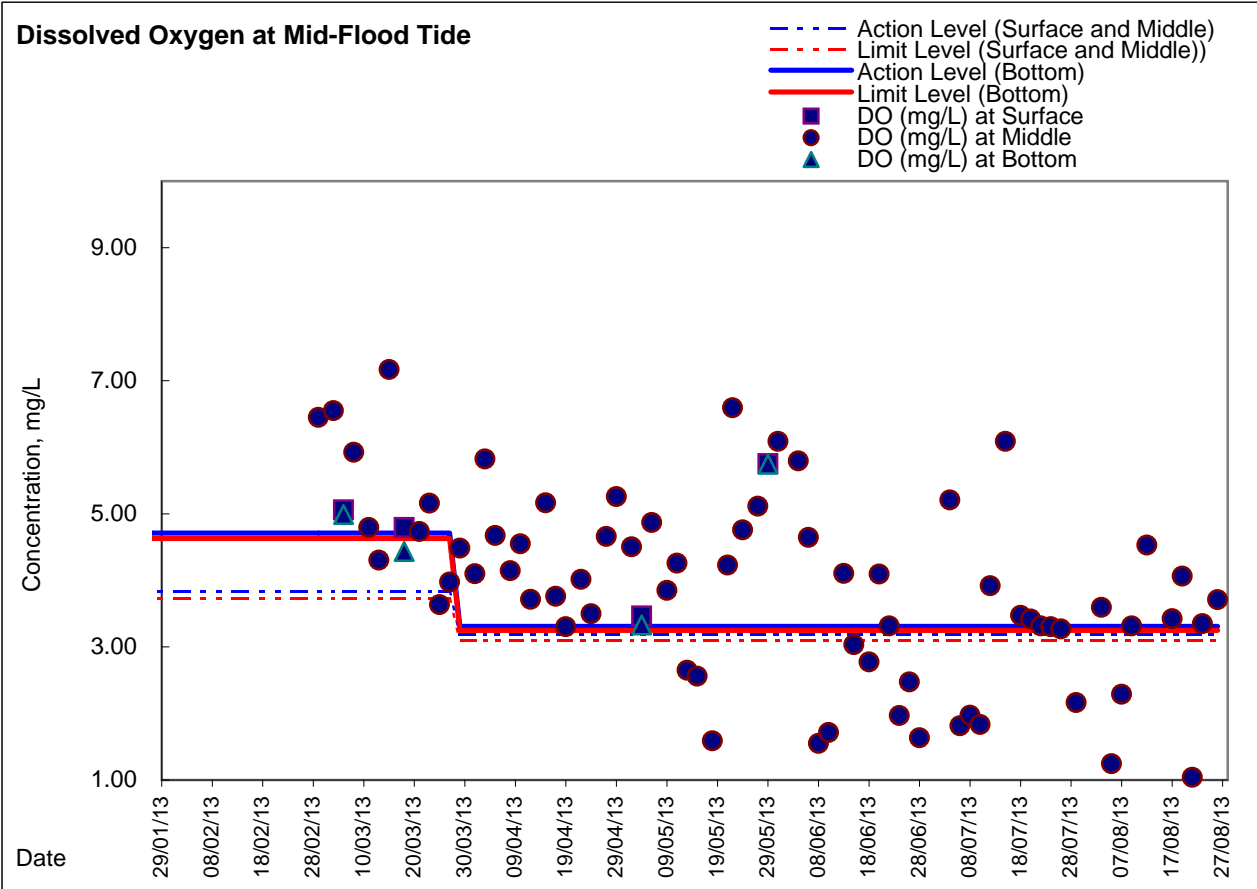




### Graphic Presentation of Enhanced Water Monitoring Results (DO) at C7 - Windsor House



**Graphic Presentation of Enhanced Water Monitoring Results (DO) at Ex-WPCWA SW  
- South-western corners of ex-Public Cargo Works Area**





### Graphic Presentation of Enhanced Water Monitoring Results (DO) at Ex-WPCWA SE - South-eastern corners of ex-Public Cargo Works Area

